

OFFICIAL PUBLICATION OF THE NSW BOWLING GREENKEEPERS' ASSOCIATION



# THE BOWLING GREENKEEPER

NOVEMBER 2017

VOLUME 70 NO 69

## **Mark Wilcher named Living Turf Greenkeeper of the Year 2017**



*Mike Darlington from Living Turf pictured with 2017 nominee Phil Townsend, Living Turf Greenkeeper of the Year Mark Wilcher and nominee Brent McCristal*

## ALSO IN THIS ISSUE

Persistent patch diseases on Tifdwarf greens by Gary Beehag

State Championships at Ballina 2018

Vale Tony Morgan and Dick Pinkerton

Financial Reports

News from the ACT, Mid North Coast & Northern Rivers

Rep's Report & More

# "Bowling Club Shade Specialist"

Since 1990

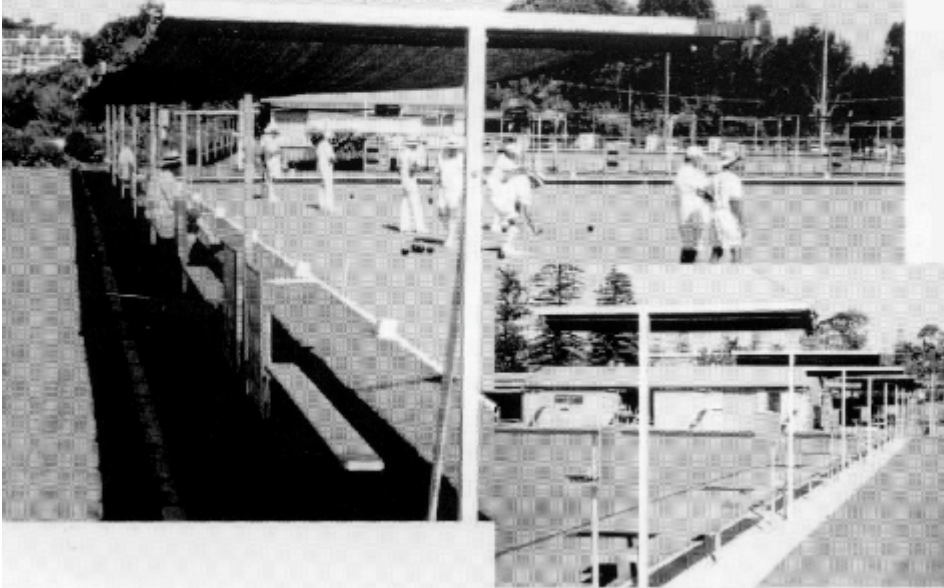
## Shadex

INDUSTRIES PTY LTD

SYDNEY GOLD COAST

Tel: (07) 5574 5911

Mob: 0418 383 443



### "SHADEAWAY 2000"

Retractable Shade System now features stainless steel and poly carbonate components to prevent premature rusting. A standard run of 7 independently operated sections (one per rink) can be extended or retracted with ease in a few minutes. FROM \$4,594+GST

## Professionally Designed for Bowls Clubs



### "FLIPTOP"

Featuring long and short sides which can be reversed to maximise shade or reduce shading on the greens. **\$730**  
FROM \$730+GST



### "SUNCHASER"

Retractable. This innovative shade unit is available in three versions. Double sided, single sided or a single sided retractable with short fold away rear canopy. Price **\$1175+GST**



### "RIVIERA"

A non retractable version of the double sided SUNCHASER. Waterproof fabric. **\$710+GST**

For more information fill out this form and mail or fax to:

**Shadex Industries**

13 Export Dr Ernest Q 4214

Fax: (07) 5574 5922

Club Name:

Address:

Post Code:

Contact:

Telephone: ( )

## IN THIS ISSUE

President's Report	4
Rep's Report	6
Living Turf Greenkeeper of the Year 2017	8
Persistent patch diseases on Tifdwarf bowling greens	9
Financial Statements	13
Associations	14
Vale	18-19
Notices	23

### The Bowling Greenkeeper

#### Published by:

The NSW Bowling Greenkeepers' Association  
ABN: 36 390 545 887

#### Editor:

John Flaherty Ph: 0402 572 021  
[nswbga@gmail.com](mailto:nswbga@gmail.com)

#### NSWBGA

PO Box 791 Ashfield NSW 1800  
[www.nswbga.com.au](http://www.nswbga.com.au)

#### NSWBGA Committee

<b>President:</b>	Mick Woods	Ph: 0402 073 154
<b>Secretary/Editor:</b>	John Flaherty	Ph: 0402 572 021
<b>Assistant Secretary:</b>	Andy Rodger	Ph: 9809 2071
<b>Treasurer:</b>	Brent McCristal	Ph: 0416 858 236
<b>Senior VP:</b>	Simon Cooper	Ph: 0425 280 306
<b>Junior VP:</b>	Matt Keough	Ph: 0411 301 570
<b>Bowls Secretary:</b>	Shannon White	Ph: 0404 812 748

<b>Committee Members:</b>	Sean Bellotti	Ph: 0412 425 900
	Adam Troth	Ph: 0400 158 874
	Michael Turner	Ph: 0434 858 632
	Rod Crean	
	Ben Morthorpe	

#### Advertising Rates

Reach more than 300 bowling greenkeepers in NSW and interstate in Queensland, the ACT and Victoria. All prices exclude GST.

	<i>New copy</i>	<i>Repeat</i>
Full page:	\$330.00	\$275.00
Half page:	\$236.50	\$192.50
Quarter page:	\$165.00	\$137.50

Contact the Editor to book your next advertisement in *The Bowling Greenkeeper*.

## RBN Light Weight Laser Levelling

Phone Alistair McArthur  
Mobile: 0407 291 707

02 4940 8333 Tighes Hill NSW



## President's Report with Mick Woods



There is much that I could touch on in this report with events such as Federation Week in Melbourne, and Legends Day (although washed out many a yarn was spun.) We look forward to sampling your greens at Engadine in 2018 Matthew Keough!

I am going to put these to one side for the moment and put forward an issue that is becoming more and more important for the turf industry and in particular the bowling fraternity. This is the ever decreasing number of both apprentices entering the industry and tradesmen to fill vacant roles.

The subject of apprentices is a subject that has been openly discussed both formally and informally over the last few years. Not only has this been a topic of interest at our Conference days, but has been a hot topic both with the AGCSA and the National Turf Working Group which is comprised of TAFE teachers from across the nation along with representation from many turf associations including NSWBGA, AGCSA and STA.

Most commonly discussed are the issues of:

- The lack of applicants for advertised positions;
- The quality (or lack thereof) of applicants;
- The poor perception of the industry reducing interest;
- Ever tightening of budgets restricting employment opportunities; and
- The lack of employment opportunities at the completion of training.

Now many ideas have been raised on these matters with some at small scale and individually implemented, such as making contact with school career advisers and educating them on the many facets of the turf industry and different avenues that can be pursued.

Others are as simple as taking longer to select the right applicant, even if this means re-advertising multiple times, conducting your own LLC test during interviewing, all good ideas that require us as custodians to pursue.

Some of the more large scale ideas revolved around media with ideas including a reality type program based around a major event, in our case maybe the Australian Open or Commonwealth Games, to more traditional advertising based around the above topics on industry perception and awareness to the diverse opportunities that are available to quality trained professionals.

Since relocating to northern inland NSW two years ago, this topic has become more important, having seen firsthand the problems that arise from low apprentice enrolments and tradesmen retention, with many clubs struggling to fill vacant positions or opting to fall back on voluntary labour. This then adds again to perception issues with surface qualities of said venues often rapidly degenerating.

I hope in some way highlighting this topic now will have an easing effect or give some ideas for when next looking to put on an employee.

Sadly, the Association has farewelled another two long standing members, Tony Morgan and Dick Pinkerton, with a short tribute included in this edition. On behalf of the Association we offer our condolences to the family and friends of these great men.

In happier news, congratulations to South West Rocks greenkeeper Mark Wilcher on being named 2017 Living Turf Greenkeeper of the Year. Mark has presented excellent greens for the State Championships held in South West Rocks and makes a great contribution to our industry. Thank you to Living Turf for their ongoing support of this prestigious award for our Association.

As this is the last edition of The Bowling Greenkeeper for 2017, I would like to wish everyone all the very best for the Festive Season.

Thank you for your support, enthusiasm and participation in the Association and our signature events this year, including Federation Week and Legends Day, as well as your local activities, and we look forward to a great program in 2018.

# SportsGrass Solutions

Specialising in Bowling  
Greens, Golf Courses,  
Cricket Wickets, Ovals  
& Tennis Courts



- PRECISION LASER  
LEVELLING
- AERATION



Follow us  
on Facebook

Using Verdi Drain, Coremaster Extreme 8, Coremaster 12,  
Shattermaster & John Deere Aerocore 800 Walk Behind

- SHAVING

Blade, Winston Suttle, Tractor Mounted & Mini Skidsteer Clean Up

- SCARIFYING

Tractor Mounted With Or Without Hydraulic Catcher

- TRACTOR MOUNTED TOP DRESSER
- REGRASSING OPTIONS

Turf Cutting, Rotary Hoe, Fertilizer Spreading & Top Off With Skidsteer  
& Tipper

**JASON JONES 0422 869 811**

**WARREN JONES 0413 288 777**

**sportsgrassolutions@gmail.com**

All Types Of Renovations Up To Major Reconstructions

# Rep's Report

MIKE DARLINGTON, LIVING TURF

TEL: 0407 100 606 [mdarlington@livingturf.com](mailto:mdarlington@livingturf.com)



The renovation season is in full swing and the conditions have been ok, if not very dry. Our driest September on record says it all, with the majority of renovated greens under a bit of stress until the rain came, around the 20 – 22 October. Hopefully we will see some follow up

moisture in the near future. I know the northern greenies will be abusing me, with all the rain they've had, but Sydney, Illawarra and the South Coast were desperate. The dreaded ground pearl is appearing already as is couch mite with the warmish dry conditions. Once again there are quite a few greens being converted to tiffdwarf this season.

Bankstown Sports Club who run Birrong Sports Club and Bankstown Bowling Club, have taken over Greenacre Bowling Club, who have been struggling for some time.

They have put a lot of money into the refurbishment of the club and it looks very good. Hopefully this will see Greenacre continue for a long period of time. Shannon White has left Northmead Bowling Club to work with Adam Troth and his staff for Bankstown Sports.

Brent Norman at Cabra Vale Diggers is now Greens and Bowls Administrator at the club in an endeavour to promote bowls there. By all accounts Brent has already made a big difference. He will be busy overseeing both aspects at the club.

Unfortunately another to add to the list - East-Roseville Bowling Club has closed its doors and merged with Lindfield Bowling Club.

I hope the renovation season goes well for everyone and being the last rep's report before Christmas, on behalf of Living Turf, I wish all members and their families all the best for the season and the New Year and hope Santa is good to all of you.

## SUPERGRASSE

### DITCH WALLS: Protects coloured bowls

With the ever increasing popularity of coloured bowls together with their cost, clubs need to be aware of their responsibility to protect their members bowls. Using a soft long pile (19 mm) the product gives a cushion effect and will not show ding marks as a result of hard drives. The Supergrasse ditch walls gives a natural turf appearance without the maintenance and ensures bowl protection. We can supply only or do the whole job for you. There is a 5 year manufacturer's warranty.

**GREAT VALUE!**

### NEW ERA RINK SCOREBOARD

Many of the features, lightweight, zinc plated and white powder coated ensures their resistance to rust. Together with the visible numbers, income producing advertisers panel and a two year warranty represents great value with their competitive pricing.

### REPLACEMENT SCOREBOARD NUMBERS

The heavy duty numbers will fit most older boards. The size of the numbers measure 100mm x 150mm with hole centres 72mm apart.

### GREENMASTER BOWLS MAT

The greenmaster Bowls mat is a high-tec multi-layered performance mat with superior non-skid, non-slip surfaces.



**Rink**  
PROMOTIONS

P 0418 411 245  
E [rinkpro@bigpond.com](mailto:rinkpro@bigpond.com)

30 YEARS AROUND THE GREENS

[www.rinkpromotions.com.au](http://www.rinkpromotions.com.au)



# Maximise your renovations.

The foundation for a strong and consistent season

## Start Strong with Renoblen 16-2-9 Greens Grade Couch Renovation Fertiliser

- Full trace elements package
- UMAXX Technology
- 13% Carbon to improve soil structure and stimulate microbes
- Activated with live beneficial microbes for plant health

## Create consistent soil moisture to suit the season with Tricure AD and Terraform

- Consistent soil moisture ensures even recovery from renovations
- Consistent greens delivers for your turf and your members
- Balanced soil moisture supports good soil microbe populations

## MATCHplay<sup>®</sup> Superior Liquids will help to keep your turf consistently performing throughout the season

- Range of season specific tools to fit your situation
- Continued contribution to beneficial microbe population started at renovations
- Build and maintain the success of a strong renovation all season long

Please speak to your Living Turf Sales Agronomist to assist with any questions

Living Turf 2/17 Barclay St, Marrickville 2204  
T: 1300 556 116 W: livingturf.com



livingturf.com.au

# Living Turf Greenkeeper of the Year

The 2017 Living Turf Greenkeeper of the Year award was presented at the annual Peter Mobbs' Shield at Engadine Bowling Club in July. Mark Wilcher, the Head Greenkeeper at South West Rocks Country Club, received this great award.

A special mention must also be made to the two other finalists, Phil Townsend (Merrylands Bowling Club) and Brent McCristal (Chatswood Bowling Club).

Mark was destined to become a greenkeeper. At just 13 years old Mark chose lawn bowls as a school sport. Growing up just 200 metres away from the local Telarah Bowling Club, it was the best way he could be home nice and quick from school! Little did he know 35 odd years later he'd be one of the best greenkeepers in NSW.

After finishing school Mark commenced his greenkeeping career in 1985 at Telarah Bowling Club and since then hasn't looked back! Mark spent seven years at Telarah under Geoff Clack before being persuaded up the road to Lorn Park Bowling Club where he would spend the next 17 years in charge.



In 2008 Mark made the move up to South West Rocks Country Club. With three greens and a large surrounding area to maintain Mark is constantly busy. Mark is assisted by Nathan Moore. The NSWBGA had the privilege of playing on Mark's greens during the 2015-16 State Championship weeks. All greenkeepers in attendance would agree that the quality of the greens and surrounds are the result of the dedication Mark puts into his work.

Mark said winning the Living Turf Greenkeeper of the Year for 2017 was a highlight of his career.

"It was a real honour to be named Greenkeeper of the Year for 2017."



Mark said hosting the State Championship Bowls Weeks in 2015 and 2016 was another highlight.

"We loved having the NSW Greenkeepers here for the State Championships and it was great to get so much positive feedback about my greens."

"I also enjoy being a part of our industry associations, the NSWBGA and our local Mid North Coast Greenkeepers Association, where I have held roles of President and currently Vice President," he said.

As well as being a talented greenkeeper, Mark is pretty handy at bowls - proving that the choice of lawn bowls for school sport paid off, winning the Australian Greenkeepers Fours.



*Pictured: South West Rocks Country Club greens in action, and Mark Wilcher at Federation Week 2017.*

**The NSWBGA and Living Turf congratulate Mark on a great achievement in winning the 2017 Living Turf Greenkeeper of the Year.**



# Persistent patch diseases on Tifdwarf bowling greens in northern NSW

By Gary W. Beehag (Sydney)

Patch diseases of Tifdwarf bowling and golf greens in coastal northern NSW caused by known species of soil-borne fungi are Spring dead patch and Take-all patch. Their respective causal agents are members of the genera *Ophiosphaerella* (formerly *Leptosphaeria*) and *Gaeumannomyces*.

Fortunately, much is known of their biology and the predisposing factors influencing disease development by these pathogens, particularly *Gaeumannomyces*.

Furthermore, fungicides are registered for turfgrass application against both diseases, particularly for Spring dead patch.

However, a recent sojourn in July to the coastal regions of northern NSW and south east Queensland highlighted the widespread occurrence and continual persistence of more than one distinctive patch disease symptom, other than Spring dead patch, on bowling greens.

The observed disease symptoms on affected Tifdwarf bowling greens ranged from being barely visible to most obvious despite the green's partial dormancy. The disease symptoms in question are not new having been known as early as the 1980's by now-retired greenkeepers. Clearly, the patch diseases in question are symptomatic of one or more soil-borne fungi or possibly a turfgrass root-disease complex.

The management issue for bowling greenkeepers is the inability to predict and effectively reduce the incidence and severity of these patch diseases without knowing the true causal agent(s) nor their precise, predisposing environmental factors.



**Figure One: Small-sized, patches on a Tifdwarf bowling green (Image courtesy Gary Beehag)**

This purpose of this article is to describe the patch-type symptoms in question, outline results of limited pathological isolations and identifications and, discuss suggested management options. However, it must be emphasised the number of diseased Tifdwarf samples collected from bowling greens displaying these symptoms in the northern regions to verify by reproducible, pathological methodologies the causal agent remains limited. Thus, only suggestions not recommendations can be made at this time.

## **Patch disease symptoms**

The recently observed patch disease symptoms in question on affected Tifdwarf bowling greens comprised either relatively small, irregularly-sized, completely blighted patches or larger-sized, straw-coloured annulus-rings. On some affected bowling greens, both described patch-type symptoms were observed on the one green. The relatively small-sized, blighted patches (Figure One) ranged from 5-10cm diameter.

These blighted patches sometimes numbered in their hundreds across some affected bowling greens.

The larger-sized, annulus-ring symptoms were generally more distinct. Club members and visitors alike would no doubt be intrigued as to the unusual geometry of multiple, circular rings. On the worst affected greens, the severity of the annulus-rings would have clearly impacted on the roll of the bowl.

The observed late-stage symptom (Figure Two) comprised roughly-circular rings varying from 10-40cm diameter or more.

Typically, some annulus-rings coalesce or partially joining having relatively unaffected centres.

The annulus-rings occurred randomly in groups across the affected green, adjacent the plinths even on the higher-mown banks at some bowling clubs.



**Figure Two: Larger-sized, annulus-rings on Tifdwarf bowling green (Image courtesy Gary Beehag)**

Observations by greenkeepers managing affected bowling greens indicates the described symptoms initially appear in autumn coinciding with falling temperatures and commencement of partial dormancy. The symptoms remain partly visible through autumn and winter depending on geographic location and seasonal conditions.

In late spring/early summer the symptoms typically become problematic resulting in partial loss of the bowling surface, again depending on location and conditions. The diseased patches in question may re-occur each year in the same areas of affected greens. On other bowling greens, the prominence of the symptom has also been observed to decline even disappear over time.

### **Soil-borne fungi on couchgrass roots**

Like all plant roots, couchgrass (*Cynodon*) cultivars develop complex, microbial associations.

These root-microbial associations range from beneficial (e.g. *Pseudomonas* bacteria, *Trichoderma* fungi) through to pathogenic (e.g. *Gaeumannomyces*, *Ophiosphaerella*) fungal species.

Turfgrass soil biology is complex being far from understood by soil microbiologists or plant pathologists. The species diversity of soil-borne fungi colonising couchgrass roots and stems remains unclear.

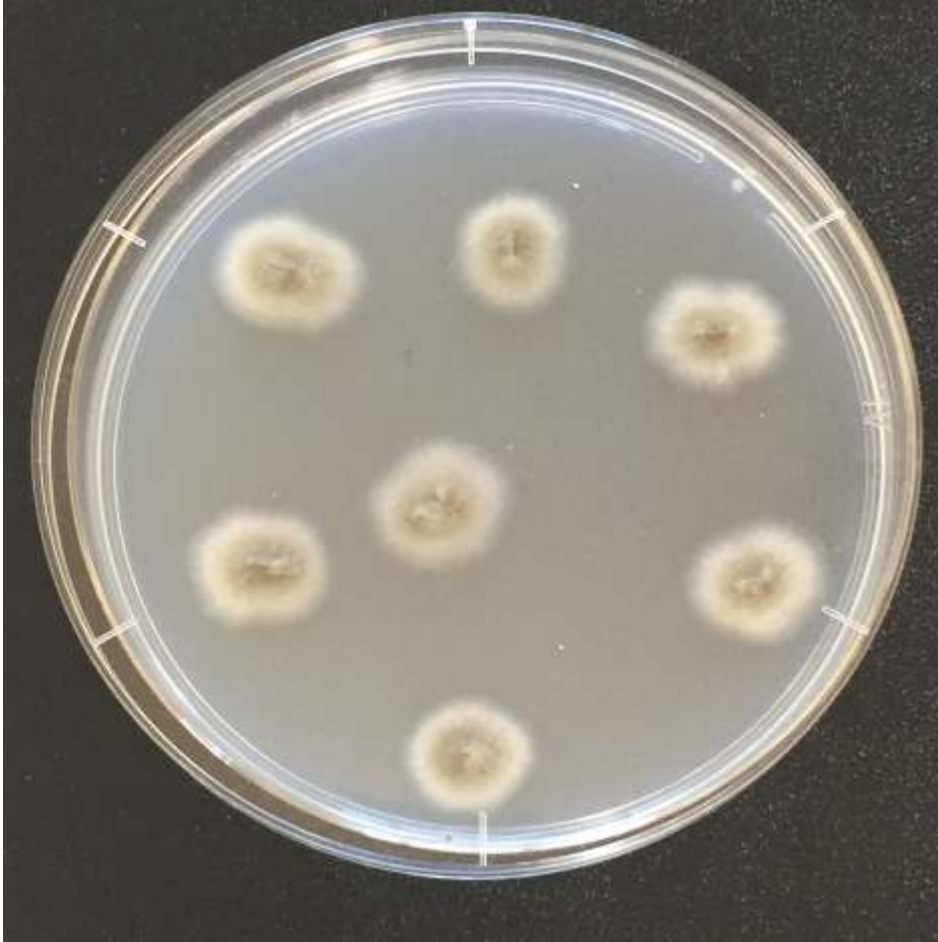
The key issue for experienced laboratory diagnosticians and plant pathologists attempting to isolate and potentially identify soil-borne pathogens is firstly to look in the right place (ie. stems and roots). Accurate identification of the primary (not secondary) pathogen(s) requires time-consuming laboratory techniques. Laboratory methodologies commence by sectioning of affected root and stem tissues, culturing isolated fungi in nutrient agar (Figure Three) and even employing complex DNA techniques in an attempt to classify and identify new fungal species. Regrettably over the years, misdiagnosis and incorrect reporting of the probable, primary causal agent(s) has resulted in the current state of confusion about the true causal agent(s) of patch-type diseases and Tifdwarf bowling and Tifgreen (328) golf greens in the northern regions.

As already stated, the symptoms in question on affected bowling greens are consistent with one or more soil-borne fungi or possibly a fungal, root disease

complex. The symptoms observed and described above are not singly those of Brown Patch (*Rhizoctonia* spp.) nor Spring Dead Patch (*Ophiosphaerella* spp.). Several *Rhizoctonia*-like fungi have been isolated in NSW from diseased couchgrass. The causal agent of Spring Dead Patch on couchgrass in Australia was first identified by Dr. Alan Smith (Sydney) in the early 1960's.

In 1999 Dr. Percy Wong confirmed *Gaeumannomyces graminis* var. *avenae*, the Take-all patch fungus, being the causal agent of similar ring-type patches long observed to occur on Tifdwarf golf greens at Ocean Shores in northern NSW. This confirmation was highly significant from a turfgrass pathological perspective as being the first time this take-all fungal variety had been isolated from damaged couchgrass in Australia. Further work on couchgrass root-infecting fungi was initiated in 2000 by Drs. Marcelle and Graham Stirling (Brisbane).

Since then, Dr Percy Wong, a Senior Research Fellow from the University of Sydney, has worked on the identification of several of these ERI (ectotrophic root-infecting) fungal diseases (refer to references). In 2002, he proved that the cause of a patch disease in buffalo grass and couchgrass called Wongoonoo Patch was caused by a new species of *Gaeumannomyces*, which he named *Gaeumannomyces wongoonoo* ("wongoonoo" is an Aboriginal word for "grass"). In 2012, he found the cause of Summer Decline to be a new species of fungus, which he named *Magnaporthe griffinii* and the cause of Adelaide Patch to be another new species, *Magnaporthe garrettii*. However, fungal taxonomists have now renamed these fungi as *Wongia griffinii* and *Wongia garrettii* respectively (Khemmuk et al. 2016).



**Figure Three: Fungal pathogen growing out of diseased couchgrass root pieces on an agar plate (Image courtesy Dr. Percy Wong)**

More recently, he described another new fungus, *Phialocephala bamuru*, which is the cause of a serious disease called Fairway Patch on golf fairways predominantly in the Sydney region. However, the disease has now spread to other parts of NSW, Queensland, Victoria and Western Australia. It has also been found in one bowling club in Victoria.

Therefore, it is highly likely that there are more new diseases and fungal pathogens of turfgrasses including couchgrass cultivars to be identified in the future. Unfortunately, the reasons underlying the emergence of these new fungal pathogens will probably never be truly known. Changes in cultural practices or pesticide usage? Who knows?

So the fundamental question remains – what is the causal agent(s) responsible for these

small-sized, blighted patches and larger-diameter annulus-ring-type patches in question. Could it be another ascomycete fungi possibly in the genus *Gaeumannomyces*, *Magnaporthiopsis*, *Phialocephala* or another undescribed fungal species?

In an attempt to answer these questions, methodical and time-consuming, laboratory techniques commencing with microscopic identification, fungal isolation, culturing, identification through to DNA techniques have to be undertaken by experienced and qualified persons in plant pathology. Herein lies one of the problems for bowling greenkeepers and others anxious for an early, definitive diagnosis.

Precise identification of the causal agent(s) of diseased turfgrass is only possible with

correct sampling, appropriate preservation methods and rapid dispatch of samples. Unfortunately, improper sampling together with lack of sample preservation has probably further resulted in diagnosticians and plant pathologists not identifying the true identity of the causal agent(s) of the disease symptoms in question.

**What of biological, cultural even chemical options?**

As previously stated, turfgrass soil biology is complex. Most plant pathologists take the view it is impossible to physiologically separate plants (hosts) from certain pathogens (bacteria, fungi, nematodes, virus) in the long term. This is particularly true for pathogens that possess an inherent ability to partly penetrate and inhabit turfgrass root and stem tissues. After all, plant root disease is the interaction of a susceptible host plant with its pathogen(s) in a common soil environment.

This is where the distinction must be made between the words “management” and “control” applicable to these fungal root diseases.

Populations of soil-borne, pathogenic fungi may be managed using appropriate cultural practices (e.g. soil aeration and thatch minimisation) but never eliminated (ie. controlled) in the long term. Turfgrass pathogens do re-occur which indicates their population thus the disease has only been managed in the short term.

Only an integrated, ecological approach using appropriate and proven biological, cultural and chemical technologies will come close to long-term management of these soil-borne, couchgrass diseases.

## Biological options

A biological approach to the management of soil-borne diseases utilises known antagonistic microflora (e.g. certain bacteria and fungi). Microbial antagonists may be introduced in the form of composts (e.g. fowl manure) or commercially-available products that contain beneficial bacteria (e.g. *Bacillus*, *Pseudomonas* or *Streptomyces*) or fungal (e.g. *Gliocladium* and *Trichoderma*) species. Whilst correct utilisation of proven microbial antagonists is to be encouraged, their long-term effectiveness in the turfgrass soil environment against many recognised soil-borne fungi remains unclear. To have any effect, antagonistic microflora populations must remain high. Further, the efficacy of soil-applied products (e.g. Basamid) that release isothiocyanates into the soil against turfgrass soil-borne fungi has yet to be demonstrated.

## Cultural options

One of the common denominators recently observed on affected bowling greens during the trip was the varying degree of thatch accumulation.

In general, the presence of the described patch diseases was more common and pronounced on bowling greens having a greater accumulation of thatch, as judged when walking across or touching the playing surface.

Excessive thatch accumulation has long been demonstrated to act as an absorbent of applied pesticides including fungicides. Thus it would be reasonable to suggest that thatch minimisation (ie. grooming, scarification, tyning, etc) practices would aid management of these patch diseases. On aged greens, characterized by excessive thatch accumulation, complete physical removal and vegetative re-establishment of the bowling surface, as practiced by some bowling greenkeepers, may be the most appropriate practice over the long-term in managing these diseases.

## Fungicide options

Without knowing the true causal agent(s) of the disease symptoms in question, suggestions only can be made as to fungicide applications. In NSW at this time, several active ingredients have turfgrass registration as fungicides against so-called ERI diseases. Active ingredients currently registered as fungicides against certain ERI fungi include triadimenol, tebuconazole plus trifloxystrobin and azoxystrobin plus triticonazole. Always consult fungicide labels for specific details.

However, bowling greenkeepers are again reminded that potential long-term management of soil-borne turfgrass diseases in particular may only be realised through an integrated approach using proven biological, appropriate cultural and registered fungicides against known pathogens. The overall goal in attempting to manage soil-borne, turfgrass pathogens must be to encourage and maintain an extensive and healthy, functioning root system. There is no substitute for a root system that can recuperate from root disease.

What of resistance couchgrass cultivars? It is plausible to suggest the morphological variation long observed to occur in Tifdwarf and Tifgreen may partly account for the presence of the patch diseases in question within individual and between certain greens. Certain Tifdwarf and Tifgreen variants and other couchgrass cultivars (e.g. Champion and TifEagle) may possess a degree of less susceptibility (more tolerance) to these patch diseases. A most worthwhile investigation but one which requires considerable funding, time and patience.

## Contact the author

Finally, interested bowling greenkeepers are encouraged to contact the author (beehag50@bigpond.com or 0455 188 936) should they wish to pursue fungal isolations in

order to accurately identify the causal agent(s). They may also contact Dr Percy Wong directly: percy.wong@sydney.edu.au or 0416 853 996.

Perhaps if enough diseased Tifdwarf even Tifgreen samples are collected from a range of geographic locations from greens throughout the northern rivers region and, conclusive identifications are made, agro-chemical companies may be encouraged to conduct efficacy and phytotoxicity trials for pesticide registration purposes against the patch diseases in question.

## References

- Beehag GW, PTW Wong and MK Tan (1999) Take-All on Tifdwarf. Australian Turfgrass Management. Vol. 1.3. p. 32-33.
- Wong PTW, Tan MK and GW Beehag (2000) Confirmation of take-all patch disease in Tifdwarf hybrid couchgrass (bermudagrass) by morphological and DNA methods. Australasian Plant Pathology. 29: 19-23.
- Wong PTW (2002) *Gaeumannomyces wongoonoo* sp. nov., the cause of a patch disease of buffalo grass (*St. Augustine*) grass). Mycological Research. 106: 857-862.
- Wong PTW, C Dong, AM Stirling and ML Dickinson (2012) Two new Magnaporthe species pathogenic to warm-season turfgrasses in Australia. Australasian Plant Pathology. 41, 321-329.
- Wong PTW, C. Dong, PM Martin and PJ Sharp (2015) Fairway patch – a serious emerging disease of couch (syn. bermudagrass), (*Cynodon dactylon*) and kikuyu (*Pennisetum clandestinum*) turf in Australia caused by *Phialocephala bamuru* PTW Wong & C. Dong. sp. nov. Australasian Plant Pathology 41: 321-329. (DOI 10.1007/s13313-015-0369-0).
- Wong PTW (2015) Beware the BF1. Australian Turfgrass Management Journal. Vol. 17.2, March-April. p. 36-38.
- Khemmuk W, Geering ADW, Shivas RG (2016) *Wongia* gen. nov. (Papulosaceae, Sordariomycetes), a new generic name for two root-infecting fungi from Australia. IMA Fungus 7: 247-252.

## Acknowledgement

I thank Dr Percy Wong for the photograph in Figure 3 and his critical comments on the article

# Financial Statements

**New South Wales Bowling Greenkeepers' Association**  
**Statement of Income and Expenditure**  
**For 12 months to the 30th April 2017**

	<b>2016</b>	<b>Income</b>	<b>2017</b>
	4,627.50	Membership Subscriptions	3,540.00
	1,000.00	Greenkeeper of the Year	-
	3,514.03	Donations/Sponsorship	5,000.00
	500.50	Interest Earned	389.36
	325.00	Uniform Sales	1,010.00
	-	Championship Week	640.00
	34.00	Conference	4,750.00
	600.00	Unidentified Income	-
	5,202.48	Profit (Loss) Magazine	2,460.94
	<b>15,803.51</b>		<b>16,510.30</b>

	<b>Expenditure</b>		<b>2017</b>
	814.00	Printing Stationery & Advertising	578.30
	679.00	Telephone/Internet	823.89
	1,495.00	Travel Expense	1,269.00
	414.80	Postage	246.00
	234.40	Bank Charges	222.40
	600.00	Room Hire	-
	70.00	Floral Tribute	120.00
	7,002.40	Administration Costs	7,917.59
	283.50	Membership Cards	-
	1,045.00	Greenkeeper of the Year	1,045.00
	272.00	Championship, Trophies/Prize Money	1,415.00
	2,310.00	Conference Expenses	565.00
	-	Federation Uniforms	-
	363.00	Uniforms	2,613.80
	100.00	Apprentice Award	-
	548.00	Depreciation	-
	<b>16,231.10</b>	<b>Total Expenditure</b>	<b>16,815.98</b>
	<b>15,803.51</b>	<b>Total Income</b>	<b>16,510.30</b>
	<b>427.59</b>	<b>Profit (Loss) for the year</b>	<b>-305.68</b>

**Balance Sheet as at 1st May 2016**

<u>Current Assets</u>	<b>2017</b>	<b>2016</b>
ANZ Bank	7,239.49	5,567.17
Welfare Fund	1,000.00	1,000.00
Stock	3,040.00	3,632.00
Magazine Debtor	2,285.00	2,671.00
Investments	24,582.91	24,582.91
Cash on Hand	294.10	112.85
	<b>38,441.50</b>	<b>37,565.93</b>

**Total Assets**

<u>Non-Current Assets</u>	<b>2017</b>	<b>2016</b>
Computer	1,100.00	1,100.00
Less Accumulated Depreciation	-1,100.00	-1,100.00
	<b>0.00</b>	<b>0.00</b>
	<b>38,441.50</b>	<b>37,565.93</b>

Less Liabilities

Welfare Fund	6,123.24	5,080.40
Reimburse Petty Cash	138.41	0.00
	<b>6,261.65</b>	<b>5,080.40</b>

Total Liabilities

**Total Assets over Liabilities**

	<b>32,179.85</b>	<b>32,485.53</b>
<u>Accumulated Funds</u>		
Balance 1st May 2016	32,485.53	32,913.12
Less/Plus 2017 Gain/Loss	-305.68	-427.59
<b>Total Equity</b>	<b>32,179.85</b>	<b>32,485.53</b>

## Around the Associations

### Mid North Coast with Danny Knight & Craig Hayfield

#### Carnival Day

Monday 14<sup>th</sup> August saw the annual Mid North Coast Greenkeepers Carnival Day take place under sunny skies at Kempsey Macleay RSL Bowling Club. The beers were flowing and the smiles were wide as 70 men took to the greens on what was a great day for bowls.



Clubs from Coffs Harbour down to Port Macquarie entered teams and as the mini busses arrived it was obvious by the laughter and sledging that the boys had started early for the long journey to Royal Kempsey.

As the only annual fundraising opportunity our association has it was fantastic to see so many turn up and take part in our carnival day. With two games of bowls, lunch and raffles the punters raised just over \$1000 for the Association. This money goes towards funding the greenkeepers association meetings, Christmas party and our annual donation to the Give Me Five For Kids charity.

Each club donated gifts for the raffle table and with more prizes than you can poke a stubbie holder at it was clearly a highlight of the afternoon.



Skips dobbed in their team mates and fines collected for wrong biases, double measures and removing team mates bowls from the head also added to the overall fundraising kitty.



A well-timed toucher saw great cries of elation as that rink headed in for a free beer with lucky lead, second, third and skip ends adding an enjoyable element to the day.

It all came down to a one bowl shoot out with all two game winners to duke it out for this year's bragging rights. With the tension high and an excess of instruction from the side lines, Sawtell took the prize and walked away with meat trays and stubbie holders. Runners up took away a couple of boxes of beer and stubbie holders, and I'm pretty sure everyone else got a stubbie holder by the end of the day too.

A big thank you to all those that helped organise the day, those that took part and to Kempsey Macleay RSL Club for sponsoring the day. A special mention goes out to Rocky Stone for all his assistance with organising and overseeing the day, thanks mate.

Our greenkeepers association is a terrific asset and provides great opportunities for greenkeepers to get together and talk turf with local industry professionals because let's face it, no one else gives two bits about your fungal problems or your grooming habits. Thanks again to everyone for all the support.

## ACT with Peter Watts

Well Mother Nature sure is playing games with us down here in the national capital with the driest and coldest winter on record, with a hot dry summer on the way we had all save our pennies because I think we are all going to get stung with some nasty water bills and there is not much we can do about that.

The growing season has kicked off with a feel of spring in the air for a short time and almost straight into summer with some hot temperatures already registered. The high winds are driving us all crazy (the amount of tan bark I have had to pick up off the greens is ridiculous and doing it regularly come on winds enough is enough) making it hard to fertilise and water on the days that require it without mucking up the greens on the days that are scheduled for bowls.

So, the greens are starting to grow and we are all trying to get them to jump so we can get stuck into our renovations. Yep that time of year again. I am aware some of us will taking greens out early to middle of October.

Not much else to say as I'm sure everyone knows what this time of year is like and what lies ahead for us over the next few months. Good luck to every one for what could be a crazy growing season.

# LAWFORD ENGINEERING

*We supply & manufacture*

- Pre- cast Concrete Ditch walls
- Galvanised Steel Plinth
- Capping
- Rubber Insertion
- Line Markers
- Timing Ramps



78 Queen St Rochester Vic 3561 • E: [sales@lawfordengineering.com.au](mailto:sales@lawfordengineering.com.au)  
Kim 0429 845 346 • Peter 0418 505 557 • [www.lawfordengineering.com.au](http://www.lawfordengineering.com.au)

## Greenkeepers play Triples at Hat Head in September with David Croad



**Pictured: Don Forrest, David Leeder, Tommy Smith, Peter Watts, Mark Wilcher, David Croad, Cody Griffin, Chris Bannon, Jacob Bobeldyk**

### Player Profiles

Don Forrest, Kempsey Heights Bowling Club.  
Recently retired. NSWBGA Singles R/Up 1994

David Leeder Kempsey RSL Bowling Club Very casual Labourer at Hat Head Bowling Club

Tommy Smith Port City Bowling Club Retired.  
NSWBGA Single 1972 R/up 1973

Peter Watts, Belconnen Bowling Club  
NSWBGA Singles R/UP 2010  
NSWBGA Pairs R/up 2012 with S Cooper  
Federation Singles 2011 and 2017

Mark Wilcher, South West Rocks Bowling Club  
Federation Fours 2017  
Living Turf Greenkeeper of the Year 2017

David Croad, Hat Head Bowling Club  
NSWBGA Singles 2016

Cody Griffin, Kempsey Heights Bowling Club  
School Based Apprentice at Hat Head B/C  
Member of NSW CHS Country Squad  
Member of Zone 14 Junior Team

Chris Bannon, Hat Head Bowling Club  
Manager Macleay District Cemeteries

Jacob Bobeldyk Taren Point Bowling Club  
Employed at Sylvania Bowling Club. (Possible new  
NSWBGA member - Likes our jackets!)

Mark Wilcher and team were the only ones to  
receive any prize money this year. Great to have  
them all at Hat Head. Hope they all return 2018.

Suppliers of quality **Turf Care** products  
to the **Sports Turf Industries**



Sports Turf Line Marking  
Equipment



<b>Shane Summerhayes</b>	<b>0425 280 300</b>
<b>Andy Stankovic</b>	<b>0425 280 301</b>
<b>Jan Kenney</b>	<b>0425 280 302</b>
<b>Jono McPhillips</b>	<b>0425 280 303</b>
<b>Cameron Arthur</b>	<b>0425 280 304</b>
<b>Paul Lierse</b>	<b>0425 280 305</b>
<b>Simon Cooper</b>	<b>0425 280 306</b>
<b>Damien Tucker</b>	<b>0402 735 887</b>
<b>Matthew Leach</b>	<b>0477 555 509</b>

**TURFCARE**



## Northern Rivers with Duncan Elphick

From the wettest part of the State in March and April with the crippling floods, to the driest in September according to the Bureau of Meteorology. That's been our lot up here in the North East so far in 2017...

I guess everyone is battling with the changing weather patterns, but they seem to be increasing in their extremes. This would make for a ready excuse if your surfaces were not where you may like them to be, but mostly the greens around our parts have wintered well and broadly speaking, are in good shape.

October brought rains for the first time since June, which in turn made the grass grow, which is good right? Not if you're a bowler who was loving the crispy dry 17+ second surfaces that most were able to produce during the big dry. Some went in a bit early with de-thatching implements and suffered as the early spring growth never eventuated, mostly because of the big dry. So recovery to the surfaces was slow because the surfaces were still semi dormant...even with the summer like temps we were getting in early spring.

Our association has been very active throughout the year with Bowls days held most recently at Nimbin (Tiff Dwarf Shield), Lismore Heights, Ballina RSL and Evans Head. Patronage has been strong with on average 30 teams of fours give or take. We have welcomed Iluka and Yamba with both Jim Wheeler and Graham Brown representing the Clarence River area. We have already been down to Iluka to return thanks for their support and a trip to Yamba looms large in 2018.

Unfortunately we embarrassed ourselves again this year when we let Gold Coast Greenkeepers get the better of us on our home patch at Nimbin in the Tiffy Shield...next year is the 39<sup>th</sup> anniversary of the great event and we will be going all out to wrestle the prized trophy back from the boys north of the border and plans are already afoot to host the 40<sup>th</sup> at the home of Tiff in the Byron Shire.



**Matthew Keough Hydroject**

Perfect for soil decompaction any time of year

Based in Sydney, call 0411 301 570

# Vale Tony James "Morgo" Morgan

21-12-1954 - 31-5-2017

## By Duncan Elphick

Morgo started his Greenkeeping career in Adelaide at Marion Men's Bowling Club in 1976. He worked there for two years. In '78 he saw the light and moved to the East Coast of Australia and started a long working relationship at Evans Head Bowling Club.

In 1982 he was involved with Moorooka Bowling club in Brisbane preparing greens for the Commonwealth Games. He also spent a few years through the early 2000s as an irrigation specialist around the Northern Rivers, but the vast majority of his career was spent at Evans Head Bowlo.

Tony's skill set was far beyond your average Greenkeeper...he was one of those annoying blokes who could fix, build or design anything, and if Morgo did it, it was done right. He never meant to, but he made you feel very inferior when discussing practical tasks because it was easy for him. He was just a clever man, and a great ambassador for our trade.

The entire facility at Evans Head is a great working monument to Tony. From the backdoor to the front, his handy work is everywhere and his expertise seemed to have no bounds. The NSWBGA rewarded Tony with 2013 Greenkeeper of the Year. We were all very happy to have seen him recognised for his efforts over the years, and this was a proud time for him too, and rightfully so.

He was a mainstay of the Northern Rivers Greenkeepers Association and is sadly missed. A true Gentleman and a great mate to many. Morgo was a very active community member in and around Evans Head involving himself in many charitable organisations, the local fire brigade and sporting clubs. He loved beach fishing and his FJ Land Cruiser, but most of all he was a dedicated family man. Tony is survived by his wife Ruth, sons Lew and Joel and his daughter Tonya and their children. Vale Tony Morgan. Rest In Peace.



**CETE SOLUTIONS PTY LTD TRADING AS**



**" THE QUALITY IS IN THE CUT "**

- Cylinder Grinding Service
- Repair and Maintenance of all Cylinder Mowers
- Repair and Maintenance of Rollers and Implements
- Prompt Turn-around
- Spare Parts
- Pickup and Delivery Service

**Cameron Petrie**

**0402 773 789**

**Darby Muller**

**0417 764 249**

**Workshop (02) 8735 7205**

Unit 3 / 10 Helles Avenue, Moorebank NSW 2170

# Vale Gerald Richard (Dick) Pinkerton

## By Col Ridge

Dick passed away peacefully on 4<sup>th</sup> October 2017, aged 88. Husband of June, father of Gary, Kerry & Susan. He was loved by all in our greenkeeping fraternity.

Dick was a long-time member of the NSW Greenkeepers' Association for many years during the period of the late 80's & 90's. He was also the Secretary of the NSW Greenkeepers Bowling club. He supported the NSW Greenkeepers Bowling club, playing Pennants and attending all our State Carnivals, I.D.B.A. days, Bateau Bay days, Triangular days, or any other Greenkeepers days,

Dick would be one of the first there and one of the last to leave. Dick was quite a character, those of us who remember him fondly will raise a glass to his memory. RIP.

<p><b>P J C</b> <b>Sportsturf</b> <b>02 9824 0811</b> <b>The Cutting Edge</b></p>	<p><i>Jason Stig</i> <b>0419 432 699</b></p> <p><i>Craig Wright</i> <b>0409 074 799</b></p>
<p><b>Precision Grinding that is second to none</b></p>	
<p>Fertilizers, Herbicides and Pesticides Grass Seed Soil and Water Testing Bowling Green Supplies Line Marking Paint &amp; Equipment Spraying Equipment</p> <p><b>Specialising in Cylinder Grinding</b></p>	<p><i>Queens</i> <i>Bowling Green Mowers &amp; Rollers</i></p> <p><i>Great deals on Financing</i> <i>Call us for a quote!</i></p>
<p><b>a proud Australian Family owned and managed Company</b></p>	



## **NSW Bowling Greenkeepers State Championship Bowls Week 2018**

**Sunday 6<sup>th</sup> – Friday 11<sup>th</sup> May**

**Ballina RSL Bowling Club, Ballina NSW**

**Over \$3,000 prize-money on offer**

- \$200 Registration for the week includes Bowls, lunch daily and 3 nights dinner
- Singles and Pairs to be played (Single entries can be found a Pairs partner if required)
- Winners eligible to represent NSW at Australian Federation Week 2020
- Plate tournament to be played for first round losers with \$500+ on offer
- Must be a financial member of the NSWBGA (if not \$50 to be paid)
- State uniform must be worn (uniforms available to be purchased from Simon Cooper 0425 280 306)
- Nominations can be made online at [www.nswbga.com.au](http://www.nswbga.com.au) or to Shannon White – Bowls Secretary on 0404 812 748 - Nominations close **Friday 13<sup>th</sup> April 2018**
- Draw for both Singles and Pairs will be done at 3pm on Wednesday 18<sup>th</sup> April 2018 at Birrong Bowling Club
- For more information and updates visit [www.nswbga.com.au](http://www.nswbga.com.au)

**Support your Association and be a part of this great  
week at Ballina**

# 2018/19 Championships

## Ballina NSW



NSW Bowling  
Greenkeepers  
Association.



Ballina RSL Club



Ballina RSL Club are proud hosts for the next two years of the NSWBGA championships and we welcome everyone to come and enjoy our beautiful part of the Northern Rivers.

Ballina RSL Bowling Club is lucky to have the financial backing of our parent club the Ballina RSL Club. Both venues will be utilized in May 2018/19. The Bowling Club is primarily a bowling facility although there is a strong social atmosphere among the local punters. The original green was out the front of the existing clubhouse in River Street but in the early-mid 1980's Ballina RSL Club purchased land (1.8 ha) on Canal Rd Ballina for a new facility to cater for the growing sport and local membership and the new Ballina RSL Bowling Club was opened in 1986.

The main club is in River st Ballina (venues are 1.9 km apart or 4min drive) and is set on the majestic Richmond river right in the heart of town.

Ballina RSL Club is one of the most successful clubs in Northern NSW and recently finished a major renovation of the River St complex, maximising the stunning views down the mighty Richmond River. The Club boasts all the modern trimmings needed for a good time.

Both clubs are situated close to many motels and my best advice would be to stay in town or between both clubs.... we will be supplying a courtesy bus which will be doing the loop on a regular basis for ease of getting about town during the week.

Ballina is serviced by the Ballina /Byron Gateway Airport a one hour flight from Sydney and Newcastle and you can get anywhere in Ballina within 10 minutes from the airport. Otherwise its an 8 hour drive from Sydney up the Pacific Highway.

Over the page is a map showing the whereabouts of both clubs, also accommodations and pricing/ratings for those accommodation options.

Hopefully I've wet the whistle so to speak and we get a strong field.

For those who have never experienced the fun times and good competition that takes place during NSWBGA Championship week, I can say from my recent experiences in South West Rocks and Melbourne during Federation week the bonds made are real and the opportunity to kick it amongst the brotherhood of Greenkeepers for a few days regardless of your bowling ability is reward enough. You will have a great time.... Guaranteed!!

No doubt you will be hearing more about the event in future reports/magazines but if anyone has questions about accommodation or the venues check the web sites : [ballinarsl.com.au](http://ballinarsl.com.au) or [discoverballina.com](http://discoverballina.com) ..... or you can call me 0488131364 if you want some local advice.

Cheers

Duncan Elphick



ballina rsl  
bowling club



# Local Accommodation

## hotels, motels and resorts

To check availability and prices or make a booking visit [www.discoverballina.com](http://www.discoverballina.com)

PROPERTY NAME & ADDRESS	PHONE	CHAIN	INDICATIVE TARIFF
<b>BALLINA</b>			
Aimare Tourist Motel, 339 River Street	6686 2873		From \$75
Avlon Gardens Motel, 16 Bangalow Road	6686 4044		From \$105
Ballina Byron Motor Inn, 329 River Street	6688 8366		From \$85
Ballina Island Motor Inn Cnr Ronan Place and River Street	6686 8866	Best Western	From \$110
Ballina Manor Boutique Hotel 37 Norton Street	6681 5888		From \$139
Ballina Palms Boutique Motel Cnr Bentinck & Owen Streets	6686 4477		From \$120
Ballina Travellers Lodge, 36-38 Tamar Street	6686 6737		From \$115
Chaparral Motel, 486 River Street	6686 3399		From \$85
Coast Inn Motel, 311 River Street	6686 3300		From \$85
Ballina Colonial Motel, 9 Bangalow Road	6686 7691		From \$110
Comfort Inn All Seasons, 301 River Street	6686 2922	Choice Hotels	From \$110
Fun 'n' Sun Motel, 471 River Street	6686 3982		From \$85
Ballina Heritage Inn, 229 River Street	6688 0505		From \$130
Hi Craft Motel, 297 River Street	6686 8868		From \$85
Ballina Homestead Cnr Fox and Cherry Streets	6686 3333		From \$89
Quality Hotel Ballina, Compton Drive	6686 8888		From \$155
Ramada Hotel & Suites, Martin Street	6618 1000		From \$165
Richmond Motor Inn 227 River Street	6686 9100	Golden Chain	From \$120
Riverside Holiday Apartments, 35 Fawcett St	6681 9200		From \$170
Slipway Hotel/Motel 56 River Street	6686 2135		From \$79
<b>ALSTONVILLE &amp; THE HINTERLAND</b>			
Alstonville Settlers Motel 198 Ballina Road, Alstonville	6628 5285		From \$100
Arrabella Garden Inn 1 Smith Lane, Wollongbar	6628 5666		From \$135
<b>LENNOX HEAD</b>			
Lennox Beach Resort, 7 Park Lane	6618 0000		From \$159
Santa-Fe Motel, 8 Byron Street	6687 7788		From \$120

## self-contained accommodation

PROPERTY NAME & ADDRESS	PHONE	INDICATIVE TARIFF (min nights in brackets)
<b>BALLINA</b>		
Angels Beach Lodge, 3 Sea Swallow Pl, East Ballina	6686 5253 0425 302 719	From \$145 inc b/fast (2)
Ballina Homestead, Cnr Fox & Cherry Streets	6686 3333	From \$125 (1)
By The River & Town, 2/24 Tamar St	0408 233 586	From \$152 (2)
Beachcomber Sea Cottage, 16 Suvla St	0408 233 586	From \$169 (2)
Carol's Cozy Corner, 1/10 Burnet St	0416 073 633	From \$120 (3)
Central Ballina Executive Apartment, U 621 Ramada Complex	0414 315 575	From \$145 (3)
Fun 'n' Sun Motel, 471 River St	6686 3982	From \$86
Grandview Apartments, Grandview St	6686 6999	From \$160 (2)
Leisure-Lee Holiday Units, 6 Easton Place	6686 2426	From \$115 (1)
Machicol Cottage, 5a Burnet St	6686 2758	From \$160 (2)
Ramada Hotel & Suites, 2 Martin St	6618 1000	From \$165
Riverside Holiday Apartments, 35 Fawcett St	6681 9200	From \$220 (1)
Villa Riviera, 3/1 Henry Phip Ave	0413 752 255	From \$215 (2)
<b>LENNOX HEAD</b>		
Absolute Beach Front Apartments 77 Ballina Street Lennox Head	6687 5521 0467 677 672	Weekly from \$620 From \$180 per night
Allez Pacific Rose 2/4 Pinnacle Row	0431 915 909	From \$750 (3 night min)
Lennox Beach Resort, 7 Park Lane	6618 0000	From \$165
Lennox Beachfront Escape, Unit 4T, 77 Ballina Street	6687 7579	From \$175
Lakesong in Lennox Head, Stewart St	66190226	From \$240 (2 night min)
Lennox Holiday Apartments, 20-21 Pacific Parade	6687 5900	From \$190
Sanbah, 16 Rayner Lane, Lennox Head	6686 3844	From \$250
Santa Fe Motel & Holiday Units, 8 Byron Street, Lennox Head	6687 7788	From \$125 - 2 BR Unit From \$215
Waves Lennox Head, '5092' Ballina Street	6687 4399	From \$190 - \$300
<b>ALSTONVILLE &amp; THE HINTERLAND</b>		
Alstonville Country Cottages, 7 Alstonville Cemetery Rd	6628 1696	From \$140 (2)
Jemima's Guesthouse, 13 Jorgensens Lane, Brooklet	0427 176 793	From \$250 (2)
Killen Falls Hinterland House, 10 Killen Drive, Tintenbar	0413 356 464	From \$395 (4)
Pines on the Plateau, 7 Conveys Lane, Wollongbar	6628 1319	From \$175 (2 - breakfast hamper on 1 <sup>st</sup> night)
Samsara Studio, 42 Majors Lane, Fernleigh	6687 8585	From \$165 (2)
Tallaringa Views, 1344 Etham Road, Alstonville	6628 5005	From \$175 (7) - \$230 (1)

## caravan, tent & holiday parks

PROPERTY NAME & ADDRESS	PHONE	CHAIN	TARIFF RANGE			
			SITES	CABINS		
			UN-POWERED	POWERED	BASIC	DELUXE
Ballina Gardens 126 Tamarind Drive, Ballina	6686 2475		All powered	From \$30	From \$80	From \$90
Ballina Headlands Stennars Head Rd, Stennars Hd	6687 7450	BIG4	N/A	From \$37	From \$100	From \$120
Ballina Lakeside Fenwick Drive, East Ballina	6686 3953	Discovery Parks	N/A	From \$36	From \$99	From \$139
Ballina Waterfront Village 586 River Street, Ballina	6686 2984		N/A	From \$33	From \$60	N/A
Dolphin Bay Beach Village 440 South Ballina Beach Rd, South Ballina	6686 3347		From \$30	From \$40	From \$70	From \$150
Dunes on Shelly 70 Shelly Beach Rd, East Ballina	6686 9014		From \$15pp	N/A	Curr Room From \$20pp	\$8 linen hire
Flat Rock Tent Park 36 Flat Rock Road, East Ballina	6686 4848		\$33 - \$42 Backpacker rates available	N/A	N/A	N/A
North Coast Holiday Parks Ballina Central River Street, Ballina	6686 2220	North Coast Holiday Parks	All powered	From \$36	From \$88	From \$114
North Coast Holiday Parks Lennox Head Pacific Parade, Lennox Head	6687 7249	North Coast Holiday Parks	From \$33	From \$38	From \$95	Esselte from \$119
North Coast Holiday Parks Shaws Bay 1 Brighton Street, East Ballina	6686 2326	North Coast Holiday Parks	From \$35	From \$37	From \$120	From \$175
Sandalwood 978 Pimlico Road, Wardell	6683 4221		From \$22	From \$25	From \$65	From \$79



# Notices

## Awards & Wages

The new award name is: Registered and Licensed Club Award 2010.

The following wages apply as stated on [www.fwc.gov.au](http://www.fwc.gov.au).

Turfcrafterman	Wage	Hourly rate
Level 1	\$664.80	\$17.49
Level 2	\$687.60	\$18.09
Level 3	\$724.50	\$19.07
Level 4	\$769.90	\$20.26
Management/Level 1	\$844.70	\$22.23
Management/Level 2	\$919.70	\$24.20

### Apprentice

A horticulture apprentice is paid at a percentage of the Standard Rate.

1st year	55%
2nd year	65%
3rd year	80%
4th year	90%

More information, including a list of Modern Awards, is available on the Fair Work Australia website [www.fwa.gov.au](http://www.fwa.gov.au) or the Fair Work Australia Ombudsman at [www.fairwork.gov.au](http://www.fairwork.gov.au).

## Available now – Relief Greenkeeper

**Ray Cooper is an experienced greenkeeper with more than 35 years experience, currently available for relief greenkeeping statewide.**

**If you need an extra pair of hands or holiday relief, please contact Ray on 0421 004 642.**

## Frequently Asked Questions: Awards & Pay Rates

### What can I do if my take-home pay is lower than the modern award?

You can't have your take-home pay reduced as a result of the commencement of the new Fair Work System. Modern awards commenced on 1 January 2010, along with the new National Employment Standards.

The commencement of these new entitlements is not intended to result in employees receiving a pay cut. If you believe your take-home pay has been cut, you can apply to Fair Work Australia to make a 'take home pay order'.

### What is a take-home pay order?

A take-home pay order can preserve your existing rates of pay while you remain in the same job. It can apply to wages and allowances, as well as incentive based payments and overtime. An order can apply to an individual or a class of employees or outworkers who are in a similar position.

### A take-home pay order can be made if:

- A modern award applies to the employee or employees, and
- The employee or employees are in the same job as they were before the modern award commenced, and
- The amount of the employees' take-home

pay for working the same sort of hours or the same sort of work has been reduced, and

- This reduction in take-home pay has occurred because of the commencement of the modern award.

### Who can apply for a take-home pay order?

You or your union can apply to Fair Work Australia for a take-home pay order. In addition, a person acting on your behalf or on behalf of a class of employees may apply.

An application for a take-home pay order can also be made by an organisation representing outworkers on behalf of those outworkers.

# HYDROCORE

## TURF AERATION SPECIALISTS

### SERVICES INCLUDE:



- ⊙ We have Toro Hydrojects for aeration, improved water infiltration and compaction relief with minimal disturbance of your playing surface.
- ⊙ We have Verti - Drains for deep tine aeration with either solid (8 to 19mm x 300mm) or hollow tines (16 to 19mm x 250mm).
- ⊙ We have Coremasters for 5/8", 1/2" and Mini Tine coring.
- ⊙ A tractor mounted scarifier with catcher.
- ⊙ Turf shaving.
- ⊙ Walk behind topdressing unit.
- ⊙ The **SHATTER MASTER** or VIBRA MASTER are available for sub-surface aeration and drainage.

Richard has had 9 years experience as a golf course Superintendent and has been in the turf industry for 30 years. He will provide a professional quality service at a competitive price.

### For all turf renovation needs;

Contact Richard Booth

P.O. Box 125

Hawks Nest, N.S.W. 2324

Mobile: (0427) 475 049

Home: (02) 49 970 647